

AF-SEATING

佛山捷联家具有限公司

地址：佛山市南海区九江镇沙头石江工业区兴业一路9号

电话：0757-86900389

E-mail:sales01@afseating.com

<http://www.afseating.com>

Foshan Jielian Furniture co.,ltd

Add: No.9, Xingye Road 1, Shatou Shijiang Industrial
park , Jiujiang Town, Nanhai District, Foshan City

Tel: 86-757-86900389

E-mail:sales01@afseating.com

Web:www.afseating.com



AF-SEATING



精于心 · 简于形 · 健康为你

" Sense and Simplicity, for your health "



03

企业简介

About us

佛山捷联家具有限公司是一家集专业设计、研发、生产和销售为一体的高端人体工学椅创新型企业。公司座落于全球家具集散基地佛山市南海区，公司产品零配件均为自主研发和生产，有模具加工开发、注塑、扶手和铝合金压铸等关联配套工厂。

公司管理遵循全球的ISO9001质量管理体系、ISO14001环境管理标准和SA8000社会道德责任标准，所有产品都按美国办公家具协会BIFMA安全性检测标准和欧洲SGSEN1335认证测试标准设计和生产，始终为消费者提供个性化定制、健康、时尚和环保的产品。

公司的核心理念是：精于心，简于形，健康为你！

FOSHAN JIELIAN FURNITURE COMPANY LIMITED is an innovative enterprise of high-end Ergonomics Office Chair that integrates professional design, R&D, production and sales. The company is located in the global furniture distribution base of Nanhai district, Foshan city. All of products and accessories are independently researched and developed, produced by ourselves, we have our own associated factories of die processing and development, plastic injection, die casting of armrest and aluminum alloy.

Our management keeps to the global ISO9000 Quality Standard, ISO14001 environmental management standard, SA8000 Social Ethical Accountability standard, all the products are designed and produced not only according to the safety testing standard of American office furniture association (BIFMA) and but also to the European SGSEN1335 certificate testing standard, always provides for consumers the personalized customization, healthy, fashionable and environment friendly products.

The core philosophy of company is: sense and simplicity, for your health !

04

Handcraft Process

工艺展示



做一流工艺、做一流品质、做一流服务
Do first-class craft, do first-class quality, do first-class service.

BIFMA

质量检测



捷联用心做好每一步，每个细小的部件都要进行严格的安全质量检测，符合办公椅标准。

Jielian has been making each step carefully, even if a small part will be tested strictly base on safety and high quality according to modern office furniture standard.

CONTENTS 目录



人体工学椅健康诠释图

人体工学椅是一种可通过调节身功部位的调节，让不同身高、不同体重的个体在任何环境下都可找到自己最舒适状态的椅子。

Ergonomic chair is a chair for user, who has different height and weight, adjusting every function to reach maximum comfort in different environment and different posture, external world and employees to achieve mutual consciousness of enterprise.

颈部与头枕完美接触

手臂下垂与扶手面自然接触

人体颈椎骨与椅背自然贴合

背部紧贴椅背

腰部紧贴腰枕

腿弯呈95°左右
并且与坐垫前沿
留有1cm的间隙

座椅与椅背呈
100-110° 夹角



捷联制造，美誉全球！

"AF Seating is famous all over the world!"



1808 Smart Features 产品功能描述

2D HEADREST / 2D头枕
头枕的高度和角度调节

HEIGHT ADJUSTABLE BACKREST / 椅背高度调整

MULTI-FUNCTION ADJUSTMENT LUMBAR SUPPORT SYSTEM
自动弹性腰枕支撑系统

4D ARMREST / 4D 扶手
扶手宽度、角度、前后、高度调整

ONE BUTTON MULTI FUNCTION CONTROL
一键式多功能底座，可后仰锁定和高度调节。

TILT TENSION ADJUSTMENT / 后仰弹力调整

SEAT SLIDING SYSTEM
座深滑动





1808A (LF-LJ1)





1808A (LF-LJ1)

累积多年行业经验，与工业物理学家携手合作，结合人体工学概念，使椅子的同步倾仰功能更臻完美。独特的椅座曲线，有助收下巴垫，让盆骨获得最佳的保护与承托。

With many years' experience, we have been cooperating with industrial physicist and combine with the concept of ergonomics, which make the synchronized tilt fully operated, the unique seat curve benefits for sitting position, and offers the best protection and bearing for pelvis.

Focus on each details

We specialize in the design and manufacture of ergonomic chairs and pay special attention to the environmental, safety and health requirements of our products because we do not want the products to give any annoyance to our customers and strive to present our professional capabilities perfectly to every user.



1808A (LF-LJ1)





Fully
display
the
beauty



1808B (LF-LJ1)

专注每一个细节
我们专注人体工学椅的设计和制造，并特别注重产品的环保、安全性和健康要求，因为我们不希望产品给客户在使用中造成任何困扰，力求将自己的专业能力完美呈现给每一个用户。



1808B (LF-LJ1)



Focus on each details

We specialize in the design and manufacture of ergonomic chairs and pay special attention to the environmental, safety and health requirements of our products because we do not want the products to give any annoyance to our customers and strive to present our professional capabilities perfectly to every user.



1808 A

金皮



1808 A

金网



1808 B

网+皮



1808 B

网+布



LJ1

网脚



LJ2

网脚

1808尺寸图
DIMENSIONS



1806尺寸图
DIMENSIONS



1808 & 1806

材料可回收率 RECYCLABILITY	98%	
材料分析 MATERIAL ANALYSIS	比例 CONTENT	回收材料比例 RECYCLED
塑料	46%	89%
铝合金	42%	15%
钢	5%	78%
面料	5%	
PU/海绵	2%	
可回收材料总比例 RECYCLED MATERIAL TOTAL	58%	



精于心 · 简于形 · 健康为你

" AF Seating and Simplicity, for your health "

让我们做的更好!

" To be excellent !"





1806 Smart Features 产品功能描述

2D HEADREST / 2D头枕
头枕的高度和角度调节

HEIGHT ADJUSTABLE BACKREST / 椅背高度调整

MULTI-FUNCTION ADJUSTMENT LUMBAR SUPPORT SYSTEM
自动弹性腰枕支撑系统

3D ARMREST / 3D扶手
扶手角度、前后和高度调节

DOUBLE LEVER CONTROL / 双杆操控多功能底座

TILT TENSION AND HEIGHT ADJUSTMENT
后仰弹力和椅子高度调节

SEAT SLIDING AND TILT
座垫滑动及后仰锁定



专注每一个细节

我们专注人体工学椅的设计和制造，并特别注重产品的环保、安全性和健康要求，因为我们不希望产品给客户在使用中造成任何困扰，力求将自己的专业能力完美呈现给每一个用户。



1806A (NF-NJ)



1806A (LF-LJ1)



1806A (DF-LJ2)



1806A (LF-LJ1)

Fully
display the
beauty



Focus on each details

We specialize in the design and manufacture of ergonomic chairs and pay special attention to the environmental, safety and health requirements of our products because we do not want the products to give any annoyance to our customers and strive to present our professional capabilities perfectly to every user.



1806B (DF-LJ1)



1806B (LF-LJ1)





捷联制造，美誉全球！

"AF Seating is famous all over the world!"



1606 Smart Features

产品功能描述

2D HEADREST / 2D 头枕
头枕的高度和角度调节

HEIGHT ADJUSTABLE BACKREST / 椅背高度调整

MULTI-FUNCTION ADJUSTMENT LUMBAR SUPPORT SYSTEM
多功能腰枕支撑系统可前后和上下调节

3D ARMREST / 3D 扶手
扶手角度、前后和高度调节

SINGLE LEVER CONTROL / 椅子后仰和高度调节

TILT TENSION ADJUSTMENT / 后仰弹力调整



Focus on each details

We specialize in the design and manufacture of ergonomic chairs and pay special attention to the environmental, safety and health requirements of our products because we do not want the products to give any annoyance to our customers and strive to present our professional capabilities perfectly to every user.



1606A (NF-LJ2)



1606A (NF-NJ)



1606A (NF-LJ2)



1606A (NF-LJ2)



专注每一个细节

我们专注人体工学椅的设计和制造，并特别注重产品的环保、安全性和健康要求，因为我们不希望产品给客户在使用中造成任何困扰，力求将自己的专业能力完美呈现给每一个用户。



完美产品贵在创意之巧妙，活动自如的调节设计符合人体工程学原理，也充分节省有限的办公空间，体现现代化的办公与经营理念。

Perfect products are precious because of creative ideas. Flexible and adjustable designs are in accordance with ergonomic theory, and fully save the limited office space, representing modern office and management concepts.



1606B (NF-LJ2)



1606B (NF-NJ)



1606B (NF-LJ2)

Fully
display the
beauty



1606尺寸圖
DIMENSIONS



1605尺寸圖
DIMENSIONS



1606 & 1605

材料分析 MATERIAL ANALYSIS	比例 CONTENT	回收材料比例 RECYCLED
材料可回收率 RECYCLABILITY	96%	
塑料	88%	90%
铝合金	4%	10%
铜	2%	16%
面料	4%	
PU/海绵	2%	
可回收材料总比例 RECYCLED MATERIAL TOTAL	70%	



精于心 · 简于形 · 健康为你

" AF Seating and Simplicity, for your health "

让我们做的更好!

" To be excellent !"



The inherent unique sense

1605 Smart Features 产品功能描述

2D HEADREST / 2D 头枕
头枕的高度和角度调节

HANGER / 功能衣架

HEIGHT ADJUSTABLE BACKREST / 椅背高度调整

MULTI-FUNCTION ADJUSTMENT LUMBAR SUPPORT SYSTEM
多功能腰枕支撑系统可前后和上下调节

3D ARMREST / 3D 扶手
扶手角度、前后和高度调节

SINGLE LEVER CONTROL / 椅子后仰和高度调节

TILT TENSION ADJUSTMENT / 后仰弹力调整



紧扣时代脉搏，演绎时尚生活，融合现代办公最新流行元素，新颖、前卫、开放而有个性，拥有时尚前卫的崭新体验，感悟现代办公生活的新雅趣。

We aim to keep abreast of time and decorate your life and integrate the latest fashion trend of modern office element for your better time during working.

AF SEATING OFFICE CHAIR



1605B (NF-LJ2)



1605A (NF-NJ)



1605A (DF-LJ2)



1605A (NF-LJ2)





1605B (DF-LJ2)



1605B (NF-LJ2)



1605B (NF-LJ2)



完美产品贵在创意之巧妙，活动自如的调节设计符合人体工程学原理，也充分节省有限的办公空间，体现现代化的办公与管理理念。

Perfect products are precious because of creative ideas. Flexible and adjustable designs are in accordance with ergonomic theory, and fully save the limited office space, representing modern office and management concepts.





捷联制造，美誉全球！

"AF Seating is famous all over the world!"



The inherent unique sense

1501 Smart Features 产品功能描述



AUTUMNFORTUNE
OFFICE CHAIR



1501A (NF-NJ)



1501B (NF-NJ)



1501B (NF-NJ)



1501B (NF-NJ)



1501尺寸
DIMENSIONS



1108尺寸
DIMENSIONS



1501 & 1108

材料可回收率 RECYCLABILITY	96%	
材料分析 MATERIAL ANALYSIS	比例 CONTENT	回收材料比例 RECYCLED
塑料	88%	90%
铝合金	4%	30%
钢	2%	36%
面料	4%	
PU/海绵	2%	
可回收材料总比例 RECYCLED MATERIAL TOTAL	70%	



精于心 · 简于形 · 健康为你

" AF Seating and Simplicity, for your health "

让我们做的更好!

" To be excellent ! "

Focus on each details

We specialize in the design and manufacture of ergonomic chairs and pay special attention to the environmental, safety and health requirements of our products because we do not want the products to give any annoyance to our customers and strive to present our professional capabilities perfectly to every user.



1108A (NF-NJ)



1108A (LF-LJZ)



专注每一个细节

我们专注人体工学椅的设计和制造，并特别注重产品的环保、安全性和健康要求，因为我们不希望产品给客户在使用中造成任何困扰，力求将自己的专业能力完美呈现给每一个用户。



1108A (NF-NJ)





1108B (NF-NJ)



美观办公椅的设计，是理性与感性的交融，提升办公效率的同时，更让人体验到工作的快乐。

Jielian design, the blend of sense and sensibility, not only improving office efficiency, but also enjoying the fun of working.



1108B (NF-NJ)



1108B (NF)

Fully
display the
beauty



1108A (NF)



捷联制造，美誉全球！

"AF Seating is famous all over the world!"

1306 Series

完美产品贵在创意之巧妙，活动自如的调节设计符合人体工程学原理，也充分节省有限的办公空间，体现现代化的办公与管理理念。

Perfect products are precious because of creative ideas. Flexible and adjustable designs are in accordance with ergonomic theory, and fully save the limited office space, representing modern office and management concepts.



1306A

累积多年行业经验，与工业物理学家携手合作，结合人体工学概念，使椅子的同步倾仰功能更臻完美。独特的椅座曲线，有助收下巴坐姿，让盆骨获得最佳的保护与承托。

With many years experience, we have been cooperating with industrial physicist and combine with the concept of ergonomics, which make the synchronized tilt fully operated, the unique seat curve benefits for sitting position, and offers the best protection and bearing for pelvis.



1306A



1306尺寸圖
DIMENSIONS



1305尺寸圖
DIMENSIONS



1306 & 1305

材料可回收率 RECYCLABILITY	96%	
材料分析 MATERIAL ANALYSIS	比例 CONTENT	回收材料比例 RECYCLED
塑料	53.8%	90%
铝合金	-	80%
铜	40.9%	
面料	1.5%	
PU/海绵	3.8%	
可回收材料总比例 RECYCLED MATERIAL TOTAL	81%	



精于心 · 简于形 · 健康为你

" AF Seating and Simplicity, for your health "

让我们做的更好!

" To be excellent ! "

1305 Series

紧扣时代脉搏，演绎时尚生活，融合现代办公最新流行元素，新颖、前卫、开放而有个性，拥有时尚前沿的崭新体验，感悟现代办公生活的崭新意。

We aim to keep abreast of time and decorate your life and integrate the latest fashion trend of modern office element for your better time during working.



1305A



1305A

EXQUISITE

Advanced equipment and exquisite craftsmanship of the master,
creating unparalleled quality



Multi-functional training chair 多功能培训椅系列

JL-318A

培训椅
 韩国进口网布椅背
 尼龙+发泡网布椅背(带调节升降功能)
 标准网布椅背(带调节升降功能)
 灰色网布椅背
 铝合金可移动椅架
 椅架可收叠进行折叠收纳功能
 Training chair
 Korea import net cloth back
 Nylon + foamsaw seat back (with tilt adjustment function)
 Standard frame rebounded sitting sponge
 Gray painted chair frame
 Aluminum alloy movable link
 The chair frame can be folded up and the folding seat plate can be turned over



JL-318B

培训椅
 韩国进口网布椅背
 尼龙+发泡网布椅背(带调节升降功能)
 标准网布椅背
 灰色网布椅背
 铝合金可移动椅架
 椅架可收叠进行折叠收纳功能
 Training chair
 Korea import net cloth back
 Nylon + foamsaw seat back (with tilt adjustment function)
 Standard frame rebounded sitting sponge
 Gray painted chair frame
 Aluminum alloy movable link
 The chair frame can be folded up and the folding seat plate can be turned over
 PU upholster on-tilt wheel



JL-318C

培训椅
 韩国进口网布椅背
 尼龙+发泡网布椅背(带调节升降功能)
 标准网布椅背
 灰色网布椅背
 铝合金可移动椅架
 椅架可收叠进行折叠收纳功能
 Training chair
 Korea import net cloth back
 Nylon + foamsaw seat back (with tilt adjustment function)
 Standard frame rebounded sitting sponge
 Gray painted chair frame
 Aluminum alloy movable link
 The chair frame can be folded up and the folding seat plate can be turned over
 Table with cupholder, 360° rotating and folding function



JL-318D

培训椅
 韩国进口网布椅背
 尼龙+发泡网布椅背(带调节升降功能)
 标准网布椅背
 灰色网布椅背
 铝合金可移动椅架
 椅架可收叠进行折叠收纳功能
 Training chair
 Korea import net cloth back
 Nylon + foamsaw seat back (with tilt adjustment function)
 Standard frame rebounded sitting sponge
 Gray painted chair frame
 Aluminum alloy movable link
 The chair frame can be folded up and the folding seat plate can be turned over
 Table with cupholder, 360° rotating over folding function
 PU upholster on-tilt wheel



SPACE ATMOSPHERE

Imported high quality materials, pure, simple, soft and elastic, The affinity that resists hard, build the space atmosphere that gives clear and clean refined, refractive recreational, relaxed, optional office new ideas.



Multi-functional training chair 多功能培训椅系列

JL-128A

培训椅
 尼龙网背框
 尼龙网背框
 尼龙网背框
 尼龙网背框
 尼龙网背框
 尼龙网背框
 尼龙网背框
 Nylon with glass fiber seat back (with function of elevation)
 The seat fabric, except the high- and summer fabric, net cloth series
 Standard frame standard molded sponge, nylon sliding armrest back and forth
 Back longer chair frame
 The chair frame can be folded up and the folding seat plate can be turned over



JL-128B

培训椅
 尼龙网背框
 尼龙网背框
 尼龙网背框
 尼龙网背框
 尼龙网背框
 尼龙网背框
 Nylon with glass fiber seat back (with function of elevation)
 The seat fabric, except the high- and summer fabric, net cloth series
 Standard frame standard molded sponge, nylon sliding armrest back and forth
 Back longer chair frame
 The chair frame can be folded up and the folding seat plate can be turned over
 PU universal anti-static wheel



JL-128C

培训椅
 尼龙网背框
 尼龙网背框
 尼龙网背框
 尼龙网背框
 尼龙网背框
 尼龙网背框
 Nylon with glass fiber seat back (with function of elevation)
 The seat fabric, except the high- and summer fabric, net cloth series
 Standard frame standard molded sponge, nylon sliding armrest back and forth
 Back longer chair frame
 The chair frame can be folded up and the folding seat plate can be turned over
 360 degree rotary rolling cast



JL-128D

培训椅
 尼龙网背框
 尼龙网背框
 尼龙网背框
 尼龙网背框
 尼龙网背框
 尼龙网背框
 Nylon with glass fiber seat back (with function of elevation)
 The seat fabric, except the high- and summer fabric, net cloth series
 Standard frame standard molded sponge, nylon sliding armrest back and forth
 Back longer chair frame
 The chair frame can be folded up and the folding seat plate can be turned over
 PU universal anti-static wheel
 360 degree rotary rolling cast



MESH 网布样



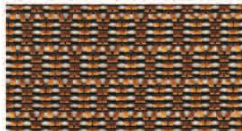
KM-10A 深灰



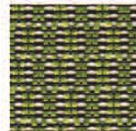
KM-11A 黑色



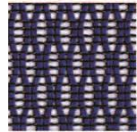
KM-12A 红色



KM-13A 黄色



KM-14A 绿色



KM-15A 蓝色



KM-16A 紫色

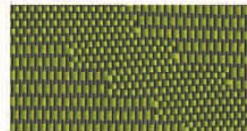


KM-17A 白色

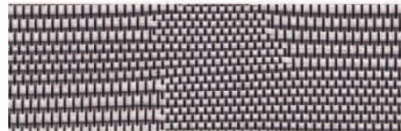
MESH 特网



KF-05-11 黑色



KF-05-14 绿色



KF-05-17 白色



KF-05-10 灰色

FABRIC 布样



26-21 深蓝



26-22 红色



26-23 深红



26-24 浅蓝



26-25 灰色



26-26 深绿



26-28 黑色



26-66 绿色

LEATHER 皮样



DY-31 黑色



DY-03 棕色



DY-206 灰色



Y066 咖啡色



GT030 黄色



GT026 军绿



QK3-13 磨砂白

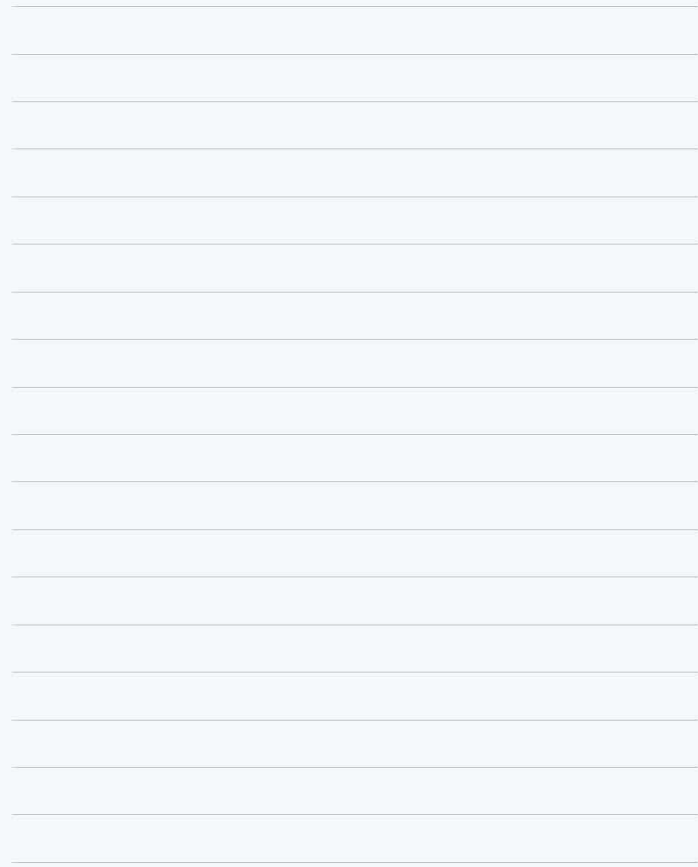


HV8-14 红色



HV8-12 绿色

AUTUMNFORTUNE OFFICE CHAIR



精于心 · 简于形 · 健康为你

" Sense and Simplicity, for your health. "