

AF-SEATING

佛山捷联家具有限公司

地址：佛山市南海区九江镇沙头石江工业区兴业一路9号

电话：0757-86900389

E-mail:sales01@afoseating.com

www.jielianseating.com

Foshan Jielian Furniture co.,ltd

Add: No.9, Xingye Road 1, Shatou Shijiang Industrial
park, Jiujiang Town, Nanhai District, Foshan City

Tel: 86-757-86900389

E-mail:sales01@afoseating.com

Web:www.jielianseating.com





| 精于心 · 简于形 · 健康为你

“ Sense and Simplicity, for your health ” |



让我们做得更好！
“ To be excellent !”

Why do we select an Ergonomic Office Chair?

为什么要选择一把人体工学办公椅

办公椅是现代办公环境的必需品，每天我们至少有8个小时坐在办公椅上，选择合适的办公椅，以表达企业的价值观，来驱动外界及员工对企业的基本概念达成共识。

The office chair is necessary to the modern office environment, and we sit on the office chair at eight hours each day, so choose suitable office chairs to demonstrate enterprise value and motivate the external world and employees to achieve mutual consciousness of enterprise.

企业简介

About us

佛山捷联家具有限公司是一家集专业设计、研发、生产和销售为一体的高端人体工学椅创新型企业。公司座落于全球家具集散基地佛山市南海区。公司所有产品零配件均为自主研发和生产，有模具加工开发、注塑、扶手和铝合金压铸等关联配套工厂。

公司管理遵循全球的ISO9001质量管理标准、ISO14001环境管理标准和SA8000社会道德责任标准，所有产品都按美国办公家具协会BIFMA安全性检测标准和欧洲SGSEN1335认证测试标准设计和生产，始终为消费者提供个性化定制、健康、时尚和环保的产品。

公司的核心理念是：精于心，简于形，健康为你！

FOSHAN JIELIAN FURNITURE COMPANY LIMITED is an innovative enterprise of high-end Ergonomics Office Chair that integrates professional design, R&D, production and sales. The company is located in the global furniture distribution base of Nanhai district, Foshan city. All of products and accessories are independently researched and developed, produced by ourselves, we have our own associated factories of die processing and development, plastic injection, die casting of armrest and aluminum alloy .

Our management keeps to the global ISO9000 Quality Standard, ISO14001 environmental management standard, SA8000 Social Ethical Accountability standard, all the products are designed and produced not only according to the safety testing standard of American office furniture association (BIFMA) and but also to the European SGSEN1335 certificate testing standard, always provides for consumers the personalized customization, healthy, fashionable and environment friendly products.

The core philosophy of company is: sense and simplicity, for your health !

CONTENTS 目录



Product Model	Page Range
1808	P15-28
1806	P28-40
1606	P41-56
1605	P56-68
1501	P69-78
1306	P79-88
1305	P88-96

Handcraft Process

工艺展示



捷联制造，美誉全球！

"Jielian is famous all over the world!"

做一流工艺、做一流品质、做一流服务

Do first-class craft, do first-class quality, do first-class service.



人体工学椅健康诠释图

人体工学椅是一种可通过椅身功能部位的调节，让不同身高，不同体重的个体在任何环境下都可找到自己最舒适状态的椅子。

Ergonomic chair is a chair for user, who has different height and weight, adjusting every function to reach maximum comfort in different environment and different posture. external world and employees to achieve mutual consciousness of enterprise.



捷联办公椅的设计，是理性与感性的交融，提升办公效率的同时，更让人体验到工作的快乐。

Jielian design, the blend of sense and sensibility, not only improving office efficiency, but also enjoying the fun of working.

颈部与头枕完美接触

手臂下垂与扶手面自然接触

人体蝴蝶骨与椅背自然贴合

背部紧贴椅背

腰部紧贴腰枕

腿弯呈95°左右
并且与坐垫前沿
留有1cm的间隙

座椅与椅背呈
100-110° 夹角





1808 Smart Features

产品功能描述

2D HEADREST / 2D头枕

头枕的高度和角度调节

HEIGHT ADJUSTABLE BACKREST / 椅背高度调整

MULTI-FUNCTION ADJUSTMENT LUMBAR SUPPORT SYSTEM

自动弹性腰枕支撑系统

4D ARMREST / 4D 扶手

扶手宽度、角度、前后、高度调整

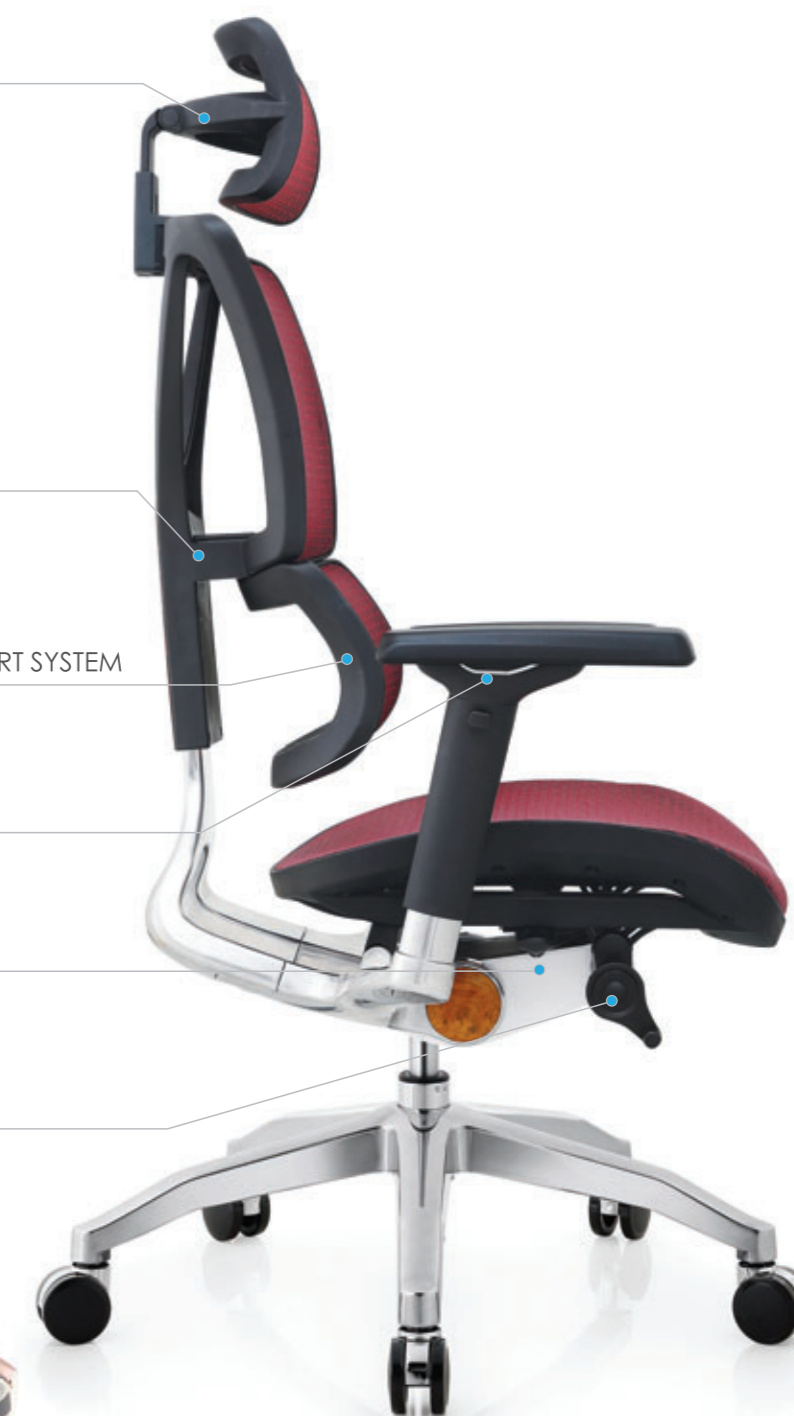
ONE BUTTON MULTI FUNCTION CONTROL

一键式多功能底盘，可后仰锁定和高度调节。

TILT TENSION ADJUSTMENT / 后仰弹力调整

SEAT SLIDING SYSTEM

座深滑动





1808A(LF-LJ1)



完美产品贵在创意之巧妙，活动自如的调节设计符合人体工程学原理，也充分节省有限的办公空间，体现现代化的办公与经营理念。
 Perfect products are precious because of creative ideas. Flexible and adjustable designs are in accordance with ergonomic theory, and fully save the limited office space, representing modern office and management concepts.

- 1808
A 全皮
- 1808
A 全网
- 1808
B 网+皮
- 1808
B 网+布
-  LJ1
椅脚
-  LJ2
椅脚



1808A (LF-LJ1)





1808A (LF-LJ1)



累积多年行业经验，与工业物理学家携手合作，结合人体工学概念，使椅子的同步倾仰功能更善尽美。独特的椅座曲线，有助收下坐姿，让盆骨获得最佳的保护与承托。

With many years experience, we have been cooperating with industrial physicist and combine with the concept of ergonomics, which make the synchronized tilt fully operated. the unique seat curve benefits for sitting position, and offers the best protection and bearing for pelvis.





1808B (LF-LJ1)



从色彩、质感、款式和座椅的功能性使得产品线条优雅和设计时尚，为您提供最称心满意的选择，符合当今不同领域企业发展的需求。

Elegant line and superb design are based on chair's color, appearance feeling, style and function, offering the best satisfying choice for you and following current enterprises in different industrial area.

- 1808
A 全皮
- 1808
A 全网
- 1808
B 网+皮
- 1808
B 网+布
- LJ1
椅脚
- LJ2
椅脚



1808B (LF-LJ1)

1808 A 全皮

1808 A 全网

1808 B 网+皮

1808 B 网+布

LJ1 椅脚

LJ2 椅脚

騰飛



1808尺寸圖
DIMENSIONS



1806尺寸圖
DIMENSIONS

1808 & 1806

材料可回收率 RECYCLABILITY

98%

材料分析

比例

回收材料比例

MATERIAL ANALYSIS

CONTENT

RECYCLED

塑料

46%

89%

鋁合金

42%

15%

鋼

5%

78%

面料

5%

PU/泡棉

2%

使用回收材料總比例

58%

RECYCLED MATERIAL TOTAL





精于心 · 简于形 · 健康为你

“ Sense and Simplicity, for your health ”

让我们做的更好!

“ To be excellent ! ”



2D HEADREST / 2D头枕
头枕的高度和角度调节

HEIGHT ADJUSTABLE BACKREST / 椅背高度调整

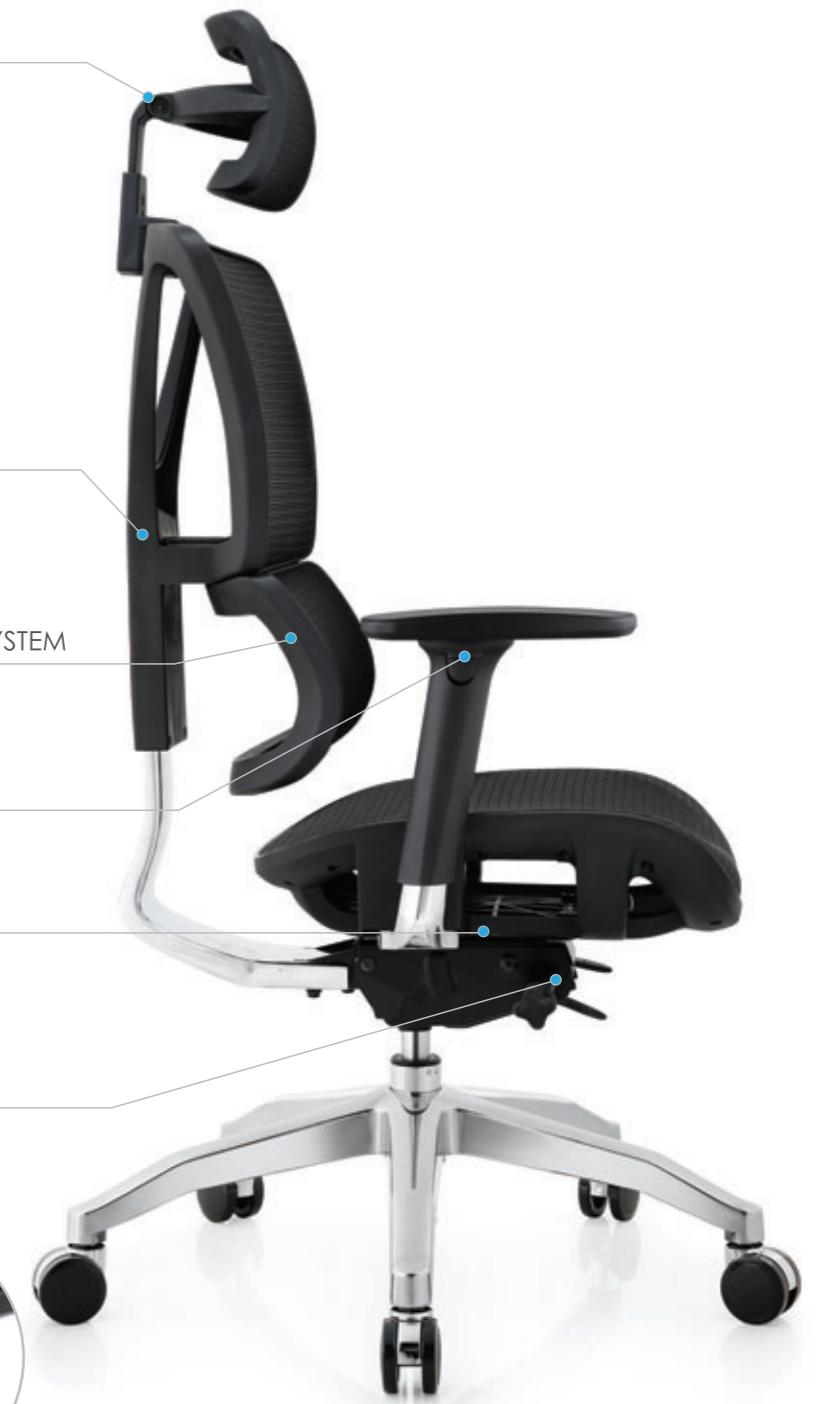
MULTI-FUNCTION ADJUSTMENT LUMBAR SUPPORT SYSTEM
自动弹性腰枕支撑系统

3D ARMREST / 3D 扶手
扶手角度、前后和高度调节

DOUBLE LEVER CONTROL / 双杆操控多功能底盘

TILT TENSION AND HEIGHT ADJUSTMENT
后仰弹力和椅子高度调节

SEAT SLIDING AND TILT
座深滑动及后仰锁定





1806A (LF-LJ1)



紧扣时代脉搏，演绎时尚生活，融合现代办公最新流行元素，新颖、前卫、开放而有个性，拥有时尚前沿的崭新体验，感悟现代办公生活的新雅趣。

We aim to keep abreast of time and decorate your life and integrate the latest fashion trend of modern office element for your better time during working.



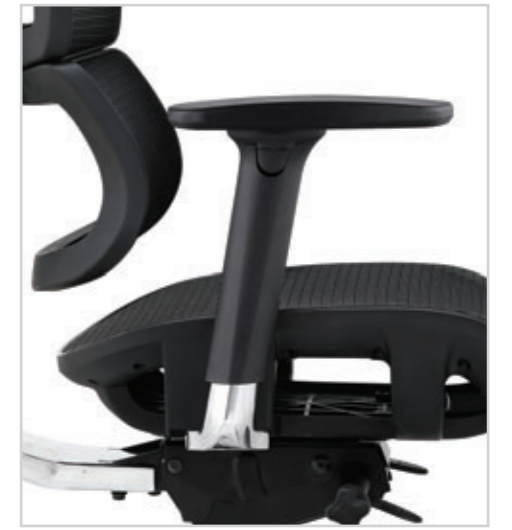
1806A(DF-LJ1)



1806A(LF-LJ1)



1806A(LF-LJ1)



1806 A 全皮
1806 A 全网
1806 B 网+皮
1806 B 网+布
LJ1 椅脚
LJ2 椅脚
DF 扶手
LF 扶手



1806B (LF-LJ1)



- 1806
A 全皮
- 1806
A 全网
- 1806
B 网+皮
- 1806
B 网+布
- LJ1 椅脚
- LJ2 椅脚
- T DF 扶手
- T LF 扶手



Focus on each details

We specialize in the design and manufacture of ergonomic chairs and pay special attention to the environmental, safety and health requirements of our products because we do not want the products to give any annoyance to our customers and strive to present our professional capabilities perfectly to every user.



1806B (LF-LJ1)

- 1806
A 全皮
- 1806
A 全网
- 1806
B 网+皮
- 1806
B 网+布
- LJ1
椅脚
- LJ2
椅脚
- T
扶手
- T
扶手



捷联制造，美誉全球！

“Jielian is famous all over the world!”



1606 Smart Features

产品功能描述

2D HEADREST / 2D头枕
头枕的高度和角度调节

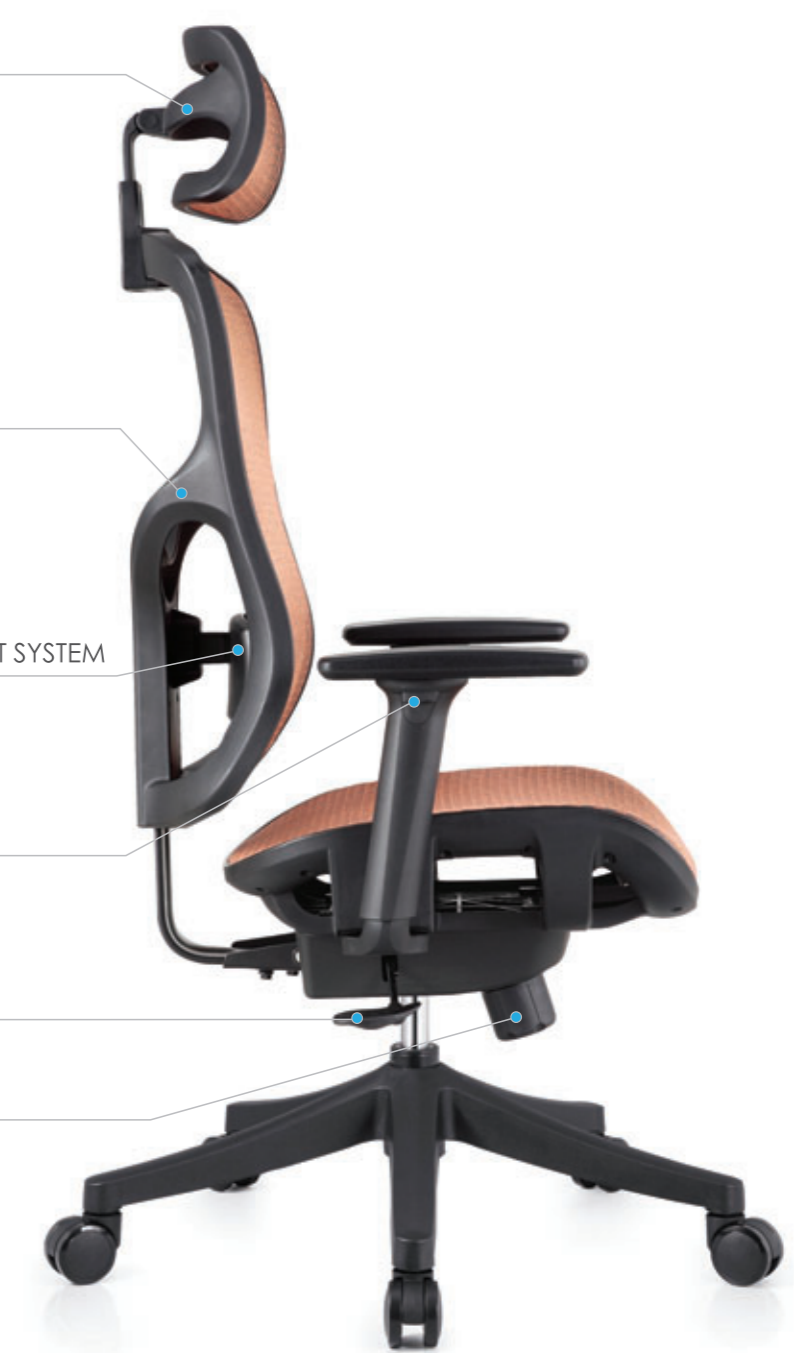
HEIGHT ADJUSTABLE BACKREST / 椅背高度调整

MULTI-FUNCTION ADJUSTMENT LUMBAR SUPPORT SYSTEM
多功能腰枕支撑系统可前后和上下调节

3D ARMREST / 3D 扶手
扶手角度、前后和高度调节

SINGLE LEVER CONTROL / 椅子后仰和高度调节

TILT TENSION ADJUSTMENT / 后仰弹力调整



The inherent unique sense



1606A (NF-NJ)

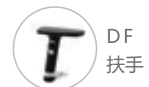
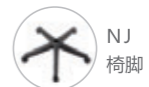


1606A (DF-NJ)



1606A (NF-LJ2)

Fully
display
the
beauty





1606A (NF-NJ)



1606A (DF-NJ)



1606A (LF-LJ1)



1606A (DF-LJ2)



完美产品贵在创意之巧妙，活动自如的调节设计符合人体工程学原理，也充分节省有限的办公空间，体现现代化的办公与经营理念。

Perfect products are precious because of creative ideas. Flexible and adjustable designs are in accordance with ergonomic theory, and fully save the limited office space, representing modern office and management concepts.



1606B (NF-NJ)



1606B (NF-LJ2)

1606 A 全皮
1606 A 全网
1606 B 网+皮
1606 B 网+布
LJ2 椅脚
NJ 椅脚
T NF 扶手
T DF 扶手
T LF 扶手



1606B (NF-LJ2)



1606B (NF-NJ)





专注每一个细节

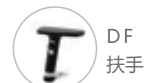
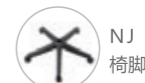
我们专注人体工学椅的设计和制造，并特别注重产品的环保，安全性和健康要求，因为我们不希望产品给客户在使用中造成任何困扰，力求将自己的专业能力完美呈现给每一个用户。

Focus on each details

We specialize in the design and manufacture of ergonomic chairs and pay special attention to the environmental, safety and health requirements of our products because we do not want the products to give any annoyance to our customers and strive to present our professional capabilities perfectly to every user.



1606B (NF-NJ)



啓航



1606尺寸圖
DIMENSIONS



1605尺寸圖
DIMENSIONS

1605 & 1606

材料可回收率 RECYCLABILITY	96%	
材料分析 MATERIAL ANALYSIS	比例 CONTENT	回收材料比例 RECYCLED
塑料	88%	90%
铝合金	4%	30%
钢	2%	36%
面料	4%	
PU/泡棉	2%	
使用回收材料总比例 RECYCLED MATERIAL TOTAL	70%	





精于心 · 简于形 · 健康为你

“ Sense and Simplicity, for your health ”

让我们做的更好!

“ To be excellent ! ”



The inherent unique sense

1605 Smart Features

产品功能描述

2D HEADREST / 2D头枕
头枕的高度和角度调节

HANGER / 功能衣架

HEIGHT ADJUSTABLE BACKREST / 椅背高度调整

MULTI-FUNCTION ADJUSTMENT LUMBAR SUPPORT SYSTEM
多功能腰枕支撑系统可前后和上下调节

3D ARMREST / 3D 扶手
扶手角度、前后和高度调节

SINGLE LEVER CONTROL / 椅子后仰和高度调节

TILT TENSION ADJUSTMENT / 后仰弹力调整





1605A (NF-NJ)



1605A (DF-LJ2)

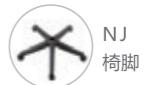


1605A (DF-NJ)



1605A (NF-NJ)

Fully display the beauty



AUTUMNFORTUNE
OFFICE CHAIR



1605A (NF-LJ2)



1605A (DF-NJ)



- 1605
A 全皮
- 1605
A 全网
- 1605
B 网+皮
- 1605
B 网+布
-  LJ2
椅脚
-  NJ
椅脚
-  NF
扶手
-  DF
扶手
-  LF
扶手



1605B (NF-NJ)



1605B (DF-LJ2)



1605B (DF-NJ)

- 1605
A 全皮
- 1605
A 全网
- 1605
B 网+皮
- 1605
B 网+布
-  LJ2
椅脚
-  NJ
椅脚
-  NF
扶手
-  DF
扶手
-  LF
扶手

从色彩、质感、款式和座椅的功能性使得产品线条优雅和设计时尚，为您提供最称心满意的选择，符合当今不同领域企业的发展的需求。

Elegant line and superb design are based on chair's color , appearance feeling , style and function , offering the best satisfying choice for you and following current enterprises in different industrial area .



1605B (NF-NJ)



1605B (NF-LJ2)





捷联制造，美誉全球！

“Jielian is famous all over the world!”



2D HEADREST / 2D头枕
头枕的高度和角度调节

HANGER / 功能衣架

HEIGHT ADJUSTABLE BACKREST / 椅背高度调整

SINGLE-FUNCTION ADJUSTMENT LUMBAR SUPPORT SYSTEM
独立式腰枕支撑系统可上下调节

3D ARMREST / 3D 扶手
扶手角度、前后和高度调节

SINGLE LEVER CONTROL / 椅子后仰和高度调节

TILT TENSION ADJUSTMENT / 后仰弹力调整



The inherent unique sense

AUTUMNFORTUNE
OFFICE CHAIR



1501A (NF-LJ2)



1501B (NF-NJ)





紧扣时代脉搏，演绎时尚生活，融合现代办公最新流行元素，新颖、前卫、开放而有个性，拥有时尚前沿的崭新体验，感悟现代办公生活的新雅趣。

We aim to keep abreast of time and decorate your life and integrate the latest fashion trend of modern office element for your better time during working.



1501A (NF-NJ)

- 1501
A 全皮
- 1501
A 全网
- 1501
B 网+皮
- 1501
B 网+布
- LJ2
椅脚
- NJ
椅脚
- NF
扶手
- DF
扶手
- LF
扶手

揚帆



1501尺寸图
DIMENSIONS

1501

材料可回收率 RECYCLABILITY

96%

材料分析
MATERIAL ANALYSIS

比例
CONTENT

回收材料比例
RECYCLED

塑料
铝合金
钢
面料
PU/泡棉

88%
4%
2%
4%
2%

90%
30%
36%

使用回收材料总比例
RECYCLED MATERIAL TOTAL

70%





精于心 · 简于形 · 健康为你

“Sense and Simplicity, for your health”

让我们做的更好!

“To be excellent!”

1306 Series



1306A

HEIGHT ADJUSTABLE BACKREST
椅背高度调整

MULTI-FUNCTION ADJUSTMENT LUMBAR SUPPORT SYSTEM
多功能腰枕支撑系统可前后和上下调节



完美产品贵在创意之巧妙，活动自如的调节设计符合人体工程学原理，也充分节省有限的办公空间，体现现代化的办公与经营理念。

Perfect products are precious because of creative ideas. Flexible and adjustable designs are in accordance with ergonomic theory, and fully save the limited office space, representing modern office and management concepts.





1306A

累积多年行业经验，与工业物理学家携手合作，结合人体工学概念，使椅子的同步倾仰功能更善尽美。独特的椅座曲线，有助收下巴姿，让盆骨获得最佳的保护与承托。

With many years experience, we have been cooperating with industrial physicist and combine with the concept of ergonomics, which make the synchronized tilt fully operated. the unique seat curve benefits for sitting position, and offers the best protection and bearing for pelvis.



AUTUMNFORTUNE

OFFICE CHAIR

从色彩、质感、款式和座椅的功能性使得产品线条优雅和设计时尚，为您提供最称心满意的选择，符合当今不同领域企业发展的需求。

Elegant line and superb design are based on chair's color , appearance feeling , style and function , offering the best satisfying choice for you and following current enterprises in different industrial area .



1306B



筑梦

1306尺寸图
DIMENSIONS



1305尺寸图
DIMENSIONS



1305 & 1306

材料可回收率 RECYCLABILITY	96%	
材料分析 MATERIAL ANALYSIS	比例 CONTENT	回收材料比例 RECYCLED
塑料	53.8%	90%
铝合金	-	
钢	40.9%	80%
面料	1.5%	
PU/泡棉	3.8%	
使用回收材料总比例 RECYCLED MATERIAL TOTAL	81%	





1305 Series

紧扣时代脉搏，演绎时尚生活，融合现代办公最新流行元素，新颖、前卫、开放而有个性，拥有时尚前沿的崭新体验，感悟现代办公生活的新雅趣。

We aim to keep abreast of time and decoarate your life and integrate the lastest fashion trend of modern office element for your better time during working.



1305A



1305A



1305A



HEIGHT ADJUSTABLE BACKREST
椅背高度调整

MULTI-FUNCTION ADJUSTMENT LUMBAR SUPPORT SYSTEM
多功能腰枕支撑系统可前后和上下调节

专注每一个细节

我们专注人体工学椅的设计和制造，并特别注重产品的环保、安全性和健康要求，因为我们不希望产品给客户在使用中造成任何困扰，力求将自己的专业能力完美呈现给每一个用户。

Focus on each details

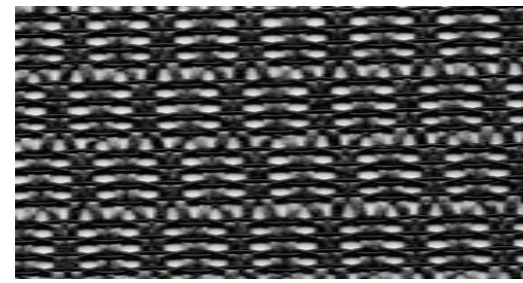
We specialize in the design and manufacture of ergonomic chairs and pay special attention to the environmental, safety and health requirements of our products because we do not want the products to give any annoyance to our customers and strive to present our professional capabilities perfectly to every user.

AUTUMNFORTUNE
OFFICE CHAIR

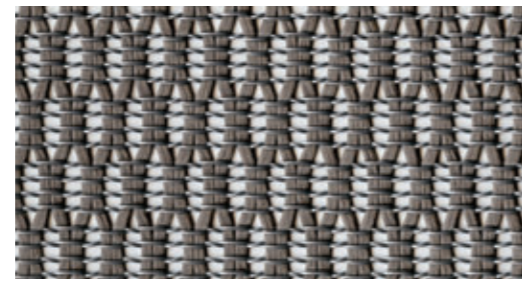


1305B

MESH 网布样



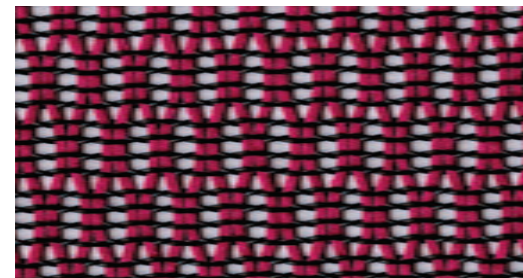
KM-10A 深灰



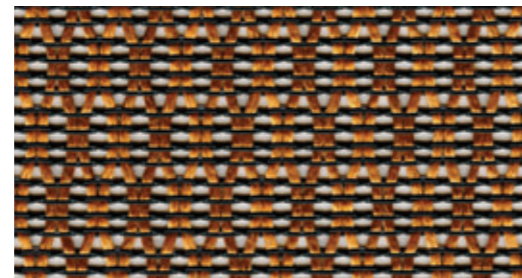
KM-10B 浅灰



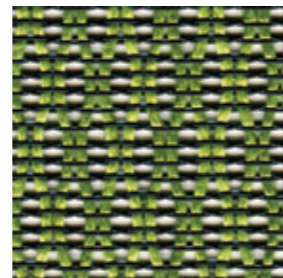
KM-11A 黑色



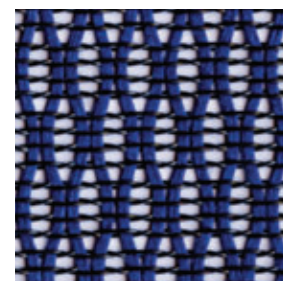
KM-12A 红色



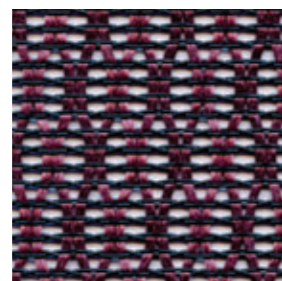
KM-13A 黄色



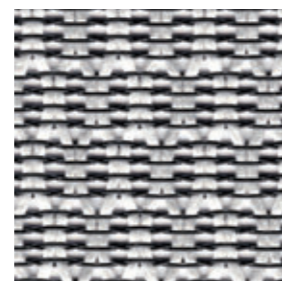
KM-14A 绿色



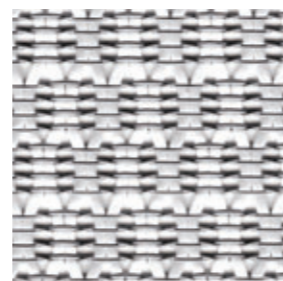
KM-15A 蓝色



KM-16A 紫色



KM-17A 白色

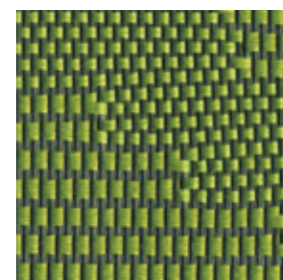


KM-17B 暖白

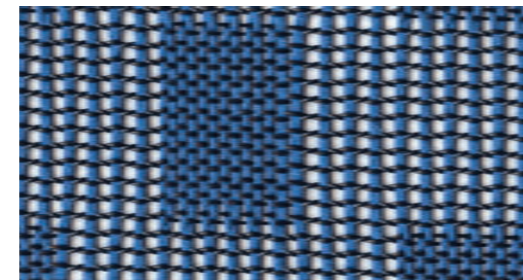
MESH 特网



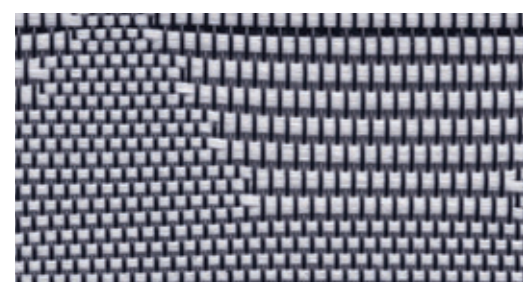
KF-05-11 黑色



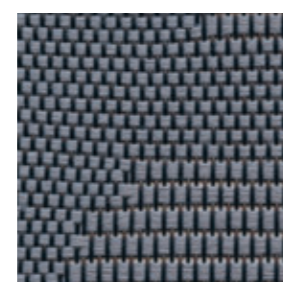
KF-05-14 绿色



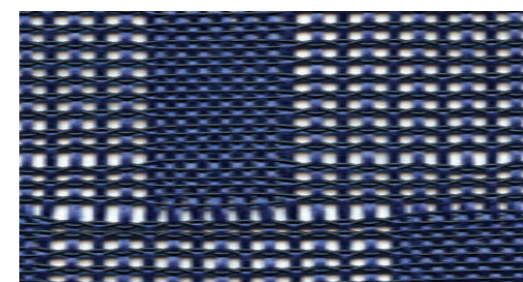
KF-06-15 浅蓝



KF-05-17 白色

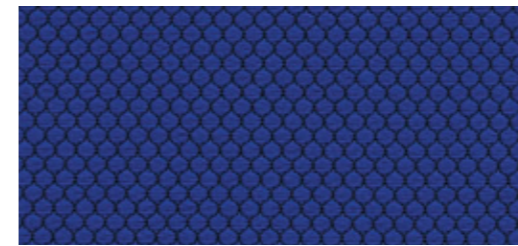


KF-05-10 灰色

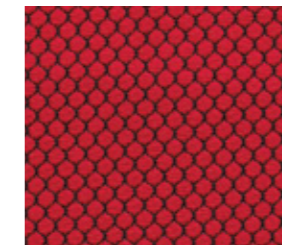


KF-06-15-1 深蓝

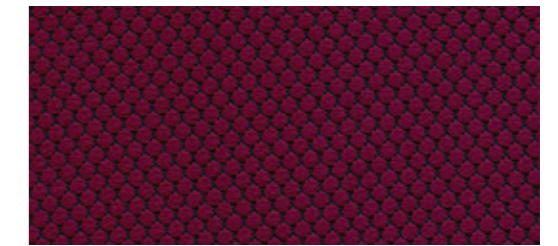
FABRIC 布样



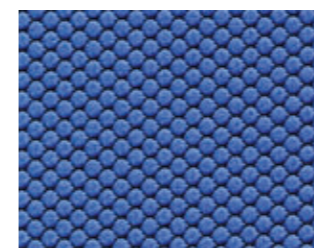
26-21 深蓝



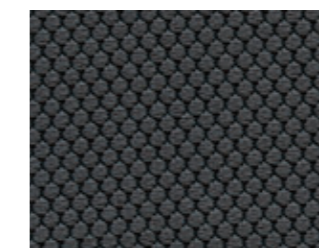
26-22 红色



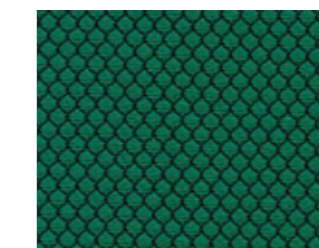
26-23 深红



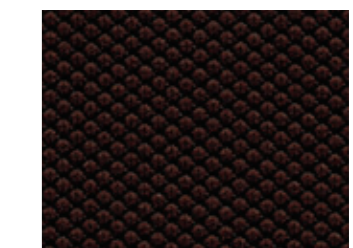
26-24 浅蓝



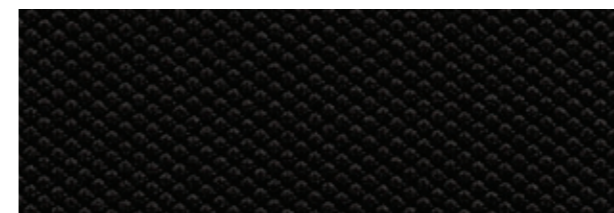
26-25 灰色



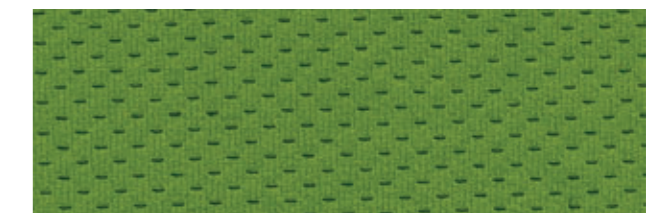
26-26 草绿



26-27 棕色

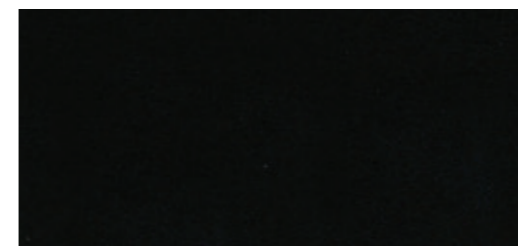


26-28 黑色

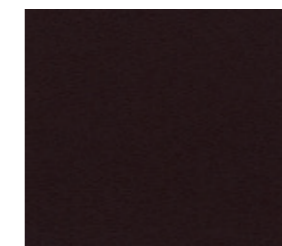


26-66 绿色

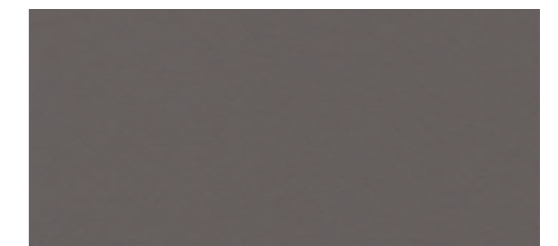
LEATHER 皮样



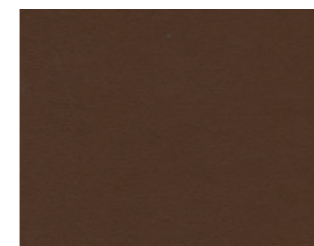
Y077 黑色



Y075 棕色



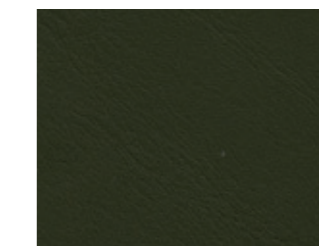
Y071 灰色



Y066 咖啡色



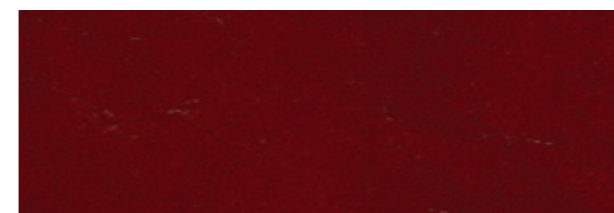
GT030 黄色



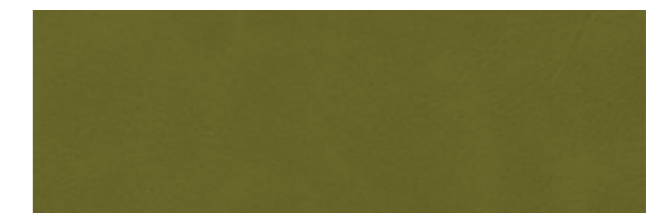
GT026 军绿



QK3-13 磨砂白



HV8-14 红色



HV8-12 绿色

